

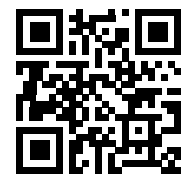


# Over-the-Counter (OTC) Benefit Catalog



[LongevityCatalogBenefit.com](https://LongevityCatalogBenefit.com)

A complimentary  
benefit at no extra cost.



Order online





# Welcome!

As a member of our health plan, you have an over-the-counter (OTC) benefit allowance to use every quarter.

This OTC benefit allows you to get nonprescription health and wellness products that help you stay healthy at home.

Throughout this catalog, you will learn more about this benefit, what kind of products you can order, and how you can order them.

Thank you for choosing Longevity Health. We hope you take advantage of this benefit and start using your OTC benefit allowance today!

**Be sure to use your OTC  
benefit allowance before  
it expires.**

**First quarter:**

January 1 – March 31

**Second quarter:**

April 1 – June 30

**Third quarter:**

July 1 – September 30

**Fourth quarter:**

October 1 – December 31



## IN THIS CATALOG

<b>OTC Benefit Overview .....</b>	<b>4</b>	<b>Feminine Care .....</b>	<b>14</b>
<b>Place your Order Online .....</b>	<b>6</b>	<b>First Aid .....</b>	<b>15</b>
<b>Place an Order by Phone.....</b>	<b>8</b>	<b>Foot Care.....</b>	<b>16</b>
<b>Catalog Order Guidelines.....</b>	<b>8</b>	<b>Home Aids.....</b>	<b>17</b>
<b>Eligible Products .....</b>	<b>9</b>	<b>Incontinence Supplies .....</b>	<b>19</b>
Bathroom Safety & Fall Prevention .....	9	<b>Skin &amp; Sun Care.....</b>	<b>21</b>
Dental & Denture Care .....	10	<b>Supports &amp; Braces.....</b>	<b>22</b>
Diabetes Care .....	12	<b>Frequently     Asked Questions .....</b>	<b>24</b>
Diagnostics .....	14		



# OTC BENEFIT OVERVIEW

You have many, easy, ways to order eligible products. Pick the way that best fits your lifestyle.

**Get products  
delivered to your door.**



Order online



Contact us by phone



## **Remember!**

You must place your orders for the benefit period before midnight Eastern Time of the last day of the quarter.







- You do not need a prescription to get these eligible OTC products.
- There are hundreds of health and wellness products that you can choose from within the pages of this catalog.
- OTC products are intended for your use only to help with a health or medical need. Longevity Health prohibits the use of this benefit to order OTC items for family members and friends.
- Additional product details and photos are available for you online.
- Shipping is free when ordering from this catalog; we got you covered!
- Unused benefits will not carry over into the next quarter.
- Your order total may not exceed your benefit amount. Cash, checks, credit cards, or money orders are not accepted under this OTC benefit.
- Your order total will be applied to the benefit period in which the order is received.
- Check out our FAQ at the end of the catalog. If you need additional information or have questions about your OTC benefit, call our dedicated advocates at (855) 657-7547 (TTY: 711) or chat with them online at **LongevityCatalogBenefit.com** Monday - Friday from 8 a.m. to 11 p.m. EST.

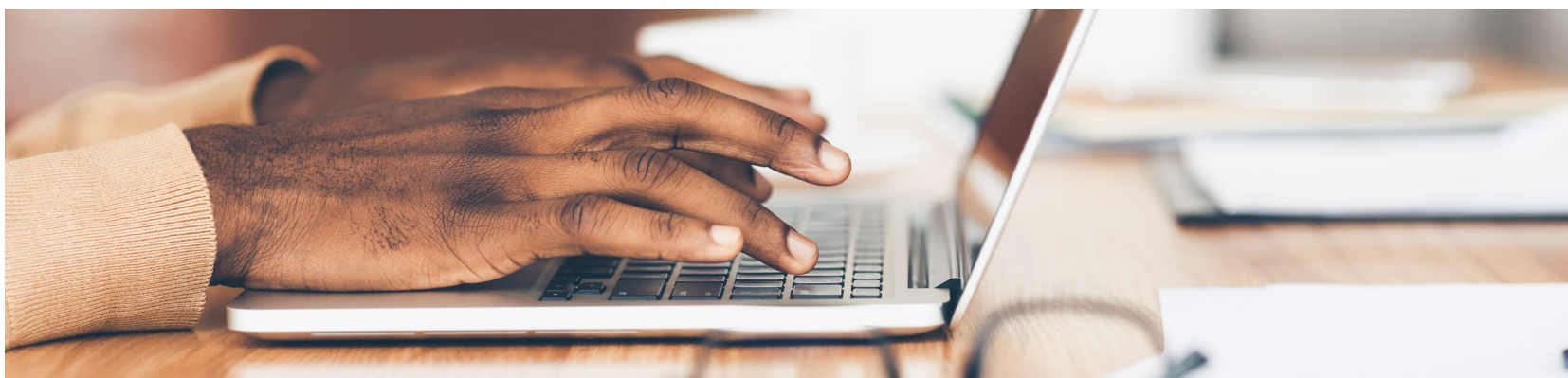
# PLACE YOUR ORDER ONLINE

Get access to convenient features and website exclusives when you manage your OTC benefit account online.

- Browse OTC products available to you
- Access a digital copy of your OTC catalog or order one to be sent to you
- Monitor your available balance while you shop
- Track your recent order and view your order history
- Manage your account
- And more!



**Watch how-to video**



If you have already created an account online, just log in to get started!  
If it's your first time ordering online, you will need to register and set up your account.



# SET UP YOUR ONLINE ACCOUNT

Access **LongevityCatalogBenefit.com** and indicate that you are a first-time user by clicking on the 'Create Account' button. Enter your information exactly as it appears on your Longevity Health ID card.

You will need the following:

- First and last name
- Health plan member ID number  
(if your ID number contains any special characters, such as a hyphen (-) or an asterisk (\*), enter only the numbers)
- State
- Date of birth

Next, you will create a unique username and password for your account.

Username \_\_\_\_\_

Password \_\_\_\_\_

Then you will choose and answer three security questions for password recovery.

**Now you can log in and access your OTC benefit online, 24/7.**

If you need any help, call us Monday - Friday from 8 a.m. to 11 p.m. EST at (855) 657-7547 (TTY: 711). We are happy to help you take full advantage of your OTC benefit.

## **Remember!**

You must place your orders for the benefit period before midnight Eastern Time of the last day of the quarter.

# PLACE AN ORDER BY PHONE

If you would like to place your order over the phone, we have customer care advocates available to take your call.

1. Browse the catalog before you call.
2. Write down the item names and numbers you want to order.
3. Contact us at (855) 657-7547 (TTY: 711)
4. OTC benefit advocates will help answer questions you may have and will place your order for you.

We are available by phone Monday - Friday from 8 a.m. to 11 p.m. EST.

Let us know how we can help you take advantage of this OTC health and wellness benefit!

## CATALOG ORDER GUIDELINES

- The products in this catalog are subject to change. Items, quantities, sizes, and values may change depending on availability. For the most up-to-date listing of OTC products available, go to **LongevityCatalogBenefit.com**.
- We reserve the right to limit quantities.
- The products in this catalog and online are personal items. For this reason, we do not allow returns or exchanges. Please call (855) 657-7547 (TTY: 711) within 30 days of placing your order if:
  - You haven't received your order.
  - You received a defective or damaged item.
- For delivery, please allow five to seven business days from the time your order is placed.



# ELIGIBLE PRODUCTS

## Bathroom Safety & Fall Prevention

### Nightlight

Item #: 1983  
Packaging: 2 ct  
Strength:  
**\$16.50**



### Treaded Slipper Socks, One Size Fits Most

Item #: 2008  
Packaging: 1 pair  
Strength:  
**\$9.00**



## Dental & Denture Care

### Dental Travel Kit

Item #: 1749  
Packaging: 1 ct  
Strength:  
**\$12.00**



### Denture Brush

Item #: 1747  
Packaging: 1 ct  
Strength:  
**\$6.50**



### Denture Cleaning Tablets

Item #: 1032  
Packaging: 40 ct  
Strength:  
**\$7.75**



### Efferdent Plus Mint Tablets

Item #: 1653  
Packaging: 44 ct  
Strength:  
**\$9.75**



### Effergrip Denture Cream Adhesive

Item #: 1843  
Packaging: 2.5 oz  
Strength:  
**\$9.75**



### Fingertip Tooth & Gum Massager

Item #: 1745  
Packaging: 1 ct  
Strength:  
**\$9.75**



### Fixodent

Item #: 1187  
Packaging: 0.75 oz  
Strength:  
**\$5.50**



### Interdental Flossups

Item #: 1751  
Packaging: 90 ct  
Strength:  
**\$6.00**



### Interdental Gum Brushes

Item #: 1748  
Packaging: 10 ct  
Strength:  
**\$7.00**



### Oral B Replacement Brush Heads

Item #: 2161  
Packaging: 3 ct  
Strength:  
**\$37.25**



### Oral Care System Kit

Item #: 1750  
Packaging: 1 ct  
Strength:  
**\$14.50**



### Polident Denture Cream

Item #: 1324  
Packaging: 3.9 oz  
Strength:  
**\$9.75**



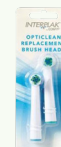
### Polident Overnight

Item #: 1892  
Packaging: 84 ct  
Strength:  
**\$13.25**



### Replacement Brush Heads

Item #: 1451  
Packaging: 2 ct  
Strength:  
**\$31.00**





**Sea-Bond Denture Adhesive  
Wafers, Lower**

Item #: 2038  
Packaging: 15 ct  
Strength:  
**\$8.75**



**Sea-Bond Denture Adhesive  
Wafers, Uppers**

Item #: 2039  
Packaging: 15 ct  
Strength:  
**\$8.75**



**Tongue Cleaner**

Item #: 1746  
Packaging: 1 ct  
Strength:  
**\$6.50**



**Toothbrush, Battery Powered**

Item #: 2015  
Packaging: 1 ct  
Strength:  
**\$22.00**



**Toothbrush, Colgate, Adult  
Medium**

Item #: 1830  
Packaging: 1 ct  
Strength:  
**\$3.50**



**Toothbrush, Colgate, Adult  
Soft**

Item #: 1413  
Packaging: 1 ct  
Strength:  
**\$3.50**



**Toothbrush, Professional Care  
Electronic**

Item #: 1894  
Packaging: 1 ct  
Strength:  
**\$85.75**



**Toothbrush, Rechargeable**

Item #: 1450  
Packaging: 1 ct  
Strength:  
**\$45.50**



**Toothbrush, Soft 2-pack**

Item #: 1948  
Packaging: 2 ct  
Strength:  
**\$7.75**



**Toothbrush, Tek Pro, Angled  
Soft**

Item #: 1412  
Packaging: 1 ct  
Strength:  
**\$4.00**



**Toothpaste, Colgate**

Item #: 1831  
Packaging: 4 oz  
Strength:  
**\$6.50**



**Toothpaste, Crest Sensi-Relief**

Item #: 1838  
Packaging: 4.1 oz  
Strength:  
**\$9.75**



**Toothpaste, Fluoride**

Item #: 1914  
Packaging: 6.4 oz  
Strength:  
**\$6.75**



**Toothpaste, Pepsodent**

Item #: 1414  
Packaging: 5.5 oz  
Strength:  
**\$4.25**



**Toothpaste, Sensitive Teeth**

Item #: 1903  
Packaging: 4.3 oz  
Strength:  
**\$5.75**



**Waxed Dental Floss, Unflavored**

Item #: 2504  
Packaging: 100 yd  
Strength:  
**\$5.00**



**Waxed Dental Floss, Cinnamon**

Item #: 2503  
Packaging: 100 yd  
Strength:  
**\$5.00**



**Waxed Dental Floss, Mint**

Item #: 2502  
Packaging: 100 yd  
Strength:  
**\$5.00**



**Toothpaste, Ultrabrite Advanced Whitening**

Item #: 1716  
Packaging: 6 oz  
Strength:  
**\$6.50**



**Diabetes Care**

**Diabetic Socks, Black, Medium 3-pack**

Item #: 1956  
Packaging: 3 pair  
Strength:  
**\$11.75**



**Diabetic Socks, Black, Large 3-pack**

Item #: 1957  
Packaging: 3 pair  
Strength:  
**\$11.75**



**Diabetic Socks, Black, X-Large 3-pack**

Item #: 1958  
Packaging: 3 pair  
Strength:  
**\$11.75**



**Diabetic Socks, White, Medium 3-pack**

Item #: 1953  
Packaging: 3 pair  
Strength:  
**\$10.25**



**Diabetic Socks, White, Large 3-pack**

Item #: 1954  
Packaging: 3 pair  
Strength:  
**\$11.75**



**Diabetic Socks, White, X-Large  
3-pack**

Item #: 1955  
Packaging: 3 pair  
Strength:  
**\$11.75**



**Ultra Soft Padded Diabetic  
Sock, Black, Medium 2-pack**

Item #: 1959  
Packaging: 2 pair  
Strength:  
**\$12.00**



**Ultra Soft Padded Diabetic  
Sock, Black, Large 2-pack**

Item #: 1960  
Packaging: 2 pair  
Strength:  
**\$12.00**



**Ultra Soft Padded Diabetic  
Sock, Black, X-Large 2-pack**

Item #: 1961  
Packaging: 2 pair  
Strength:  
**\$12.00**



**Ultra Soft Padded Diabetic  
Sock, White, Medium 2-pack**

Item #: 1962  
Packaging: 2 pair  
Strength:  
**\$12.00**



**Ultra Soft Padded Diabetic  
Sock, White, Large 2-pack**

Item #: 1963  
Packaging: 2 pair  
Strength:  
**\$12.00**



**Ultra Soft Padded Diabetic  
Sock, White, X-Large 2-pack**

Item #: 1964  
Packaging: 2 pair  
Strength:  
**\$12.00**



## Diagnostics

### Activity Tracker

Item #: 1982  
Packaging: 1 ct  
Strength:  
**\$53.50**



## Feminine Care

### Menstrual Pads Size 1

Item #: 2442  
Packaging: 30 ct  
Strength:  
**\$18.00**



### Menstrual Pads Size 2

Item #: 2443  
Packaging: 26 ct  
Strength:  
**\$18.00**



### Menstrual Pads Size 3

Item #: 2444  
Packaging: 30 ct  
Strength:  
**\$18.00**



### Menstrual Pads Size 4

Item #: 2445  
Packaging: 28 ct  
Strength:  
**\$18.00**



### Menstrual Pads Size 5

Item #: 2446  
Packaging: 26 ct  
Strength:  
**\$18.00**





## First Aid

### Antiseptic Towelettes

Item #: 1201  
Packaging: 100 ct  
Strength:  
**\$9.50**



### Band-Aid Comfort-Flex Plastic

Item #: 2054  
Packaging: 60 ct  
Strength:  
**\$8.75**



### Band-Aid Johnson & Johnson Gauze Pad - 2" x 2"

Item #: 1676  
Packaging: 25 ct  
Strength:  
**\$7.75**



### Nexcare Clear Waterproof Bandages Assorted Sizes

Item #: 1667  
Packaging: 50 ct  
Strength:  
**\$9.00**



### Nitrile Gloves (Small)

Item #: 2328  
Packaging: 100 ct  
Strength:  
**\$14.50**



### Nitrile Gloves (Large)

Item #: 1840  
Packaging: 100 ct  
Strength:  
**\$23.00**



### Nitrile Gloves (X-Large)

Item #: 2329  
Packaging: 100 ct  
Strength:  
**\$14.50**



### Vinyl Gloves (Small)

Item #: 2333  
Packaging: 100 ct  
Strength:  
**\$12.00**



### Vinyl Gloves (Large)

Item #: 2230  
Packaging: 100 ct  
Strength:  
**\$17.50**



### Vinyl Gloves (X-Large)

Item #: 2334  
Packaging: 100 ct  
Strength:  
**\$12.00**



## Foot Care

### Comfort Insoles - Size Small W(7.5-9) / M(5.5-7)

Item #: 2506  
Packaging: 1 pair  
Strength:  
**\$16.50**



### Comfort Insoles - Size Medium W(9.5-11) / M(7.5-9)

Item #: 2507  
Packaging: 1 pair  
Strength:  
**\$16.50**



### Comfort Insoles - Size Large W(11.5-13) / M(9.5-11)

Item #: 2508  
Packaging: 1 pair  
Strength:  
**\$16.50**



### Lamb's Wool Padding

Item #: 1786  
Packaging: 1 ct  
Strength:  
**\$6.25**



### Moleskin Sheets Plus

Item #: 1782  
Packaging: 4 ct  
Strength:  
**\$7.50**



### Toe Separator

Item #: 1783  
Packaging: 6 ct  
Strength:  
**\$8.75**



## Home Aids

### Aluminum Reacher with Magnetic Tip Non-Folding 32"

Item #: 2336  
Packaging: 1 ct  
Strength:  
**\$10.50**



### Button and Zipper Pull Aid

Item #: 2046  
Packaging: 1 ct  
Strength:  
**\$12.50**



### CPAP Pillow Fiber Filled

Item #: 1836  
Packaging: 1 ct  
Strength:  
**\$62.75**



### CPAP Pillow Memory Foam

Item #: 1837  
Packaging: 1 ct  
Strength:  
**\$49.25**



### Elastic Mattress Cover - 80" x 36" x 6"

Item #: 1753  
Packaging: 1 ct  
Strength:  
**\$9.50**



### Generic: Reading Glass Diopter +1.0

Item #: 2130  
Packaging: 1 ct  
Strength: 1.0  
diopter  
**\$7.50**



### Generic: Reading Glass Diopter +1.25

Item #: 2133  
Packaging: 1 ct  
Strength: 1.25  
diopter  
**\$7.50**



### Generic: Reading Glass Diopter +1.5

Item #: 2136  
Packaging: 1 ct  
Strength: 1.50  
diopter  
**\$7.50**



### Generic: Reading Glass Diopter +1.75

Item #: 2139  
Packaging: 1 ct  
Strength: 1.75  
diopter  
**\$7.50**



### Generic: Reading Glass Diopter +2.0

Item #: 2142  
Packaging: 1 ct  
Strength: 2.00  
diopter  
**\$7.50**



### Generic: Reading Glass Diopter +2.25

Item #: 2145  
Packaging: 1 ct  
Strength: 2.25  
diopter  
**\$7.50**



### Generic: Reading Glass Diopter +2.75

Item #: 2148  
Packaging: 1 ct  
Strength: 2.75  
diopter  
**\$7.50**



### Generic: Reading Glass Diopter +3.0

Item #: 2151  
Packaging: 1 ct  
Strength: 3.00  
diopter  
**\$7.50**



### Generic: Reading Glass Diopter +3.25

Item #: 2154  
Packaging: 1 ct  
Strength: 3.25  
diopter  
**\$7.50**



**Generic: Reading Glass Diopter  
+3.5**

Item #: 2157  
Packaging: 1 ct  
Strength: 3.50  
diopter  
**\$7.50**



**Generic: Reading Glass Diopter  
+4.0**

Item #: 2160  
Packaging: 1 ct  
Strength: 4.00  
diopter  
**\$7.50**



**Hypoallergenic Pillow**

Item #: 1936  
Packaging: 1 ct  
Strength:  
**\$56.75**



**Hypoallergenic Side Sleeper  
Pillow**

Item #: 2414  
Packaging: 1 ct  
Strength:  
**\$40.00**



**Hypoallergenic Side Sleeper  
Pillow Case**

Item #: 2510  
Packaging: 1 ct  
Strength:  
**\$20.00**



**LED Magnifier**

Item #: 2413  
Packaging: 1 ct  
Strength:  
**\$10.00**



**Orthopedic Neck Pillow**

Item #: 1513  
Packaging: 1 ct  
Strength:  
**\$45.25**



**Reacher Suction Cup 22"**

Item #: 2337  
Packaging: 1 ct  
Strength:  
**\$15.00**



**Reacher Suction Cup 33"**

Item #: 2338  
Packaging: 1 ct  
Strength:  
**\$15.25**



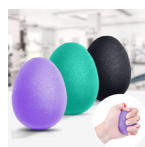
**Shoe Horn No Bend 24"**

Item #: 2339  
Packaging: 1 ct  
Strength:  
**\$12.00**



**Stress Balls**

Item #: 2344  
Packaging: 3 ct  
Strength:  
**\$8.00**



**Tray for Walker (Fold Away)**

Item #: 2350  
Packaging: 1 ct  
Strength:  
**\$19.25**



**White Noise Machine**

Item #: 2419  
Packaging: 1 ct  
Strength:  
**\$25.00**





## Incontinence Supplies

### Adult Briefs, Small - 25" to 34" (Tabs)

Item #: 1510  
Packaging: 24 ct  
Strength:  
**\$18.50**



### Adult Briefs, Medium - 32" to 44" (Tabs)

Item #: 2026  
Packaging: 24 ct  
Strength:  
**\$18.50**



### Adult Briefs, Large - 44" to 58" (Tabs)

Item #: 2027  
Packaging: 24 ct  
Strength:  
**\$23.50**



### Adult Briefs, X-Large - 58" to 63" (Tabs)

Item #: 2028  
Packaging: 20 ct  
Strength:  
**\$19.75**



### Adult Briefs, 2X-Large - 60" to 70" (Tabs)

Item #: 2515  
Packaging: 20 ct  
Strength:  
**\$19.75**



### Adult Briefs, 3X-Large - 70" to 80" (Tabs)

Item #: 2516  
Packaging: 20 ct  
Strength:  
**\$19.75**



### Attends Bariatric 2X-Large Underwear

Item #: 2219  
Packaging: 12 ct  
Strength:  
**\$27.50**



### Bathing Wipes

Item #: 2010  
Packaging: 8 ct  
Strength:  
**\$8.75**



### Bladder Control Shaped Pad, Heavy Absorbency

Item #: 1479  
Packaging: 20 ct  
Strength:  
**\$20.50**



### Bladder Control Shaped Pad, Maximum Absorbency

Item #: 1480  
Packaging: 20 ct  
Strength:  
**\$19.50**



### Disposable Underwear, Medium - 34" to 44" (Pull-up)

Item #: 1021  
Packaging: 20 ct  
Strength:  
**\$17.50**



### Disposable Underwear, Large - 44" to 58" (Pull-up)

Item #: 1026  
Packaging: 18 ct  
Strength:  
**\$17.50**



### Disposable Underwear, X-Large - 58" to 68" (Pull-up)

Item #: 1027  
Packaging: 14 ct  
Strength:  
**\$17.50**



### Flushable Wipes

Item #: 1928  
Packaging: 24 ct  
Strength:  
**\$8.75**



### Flushable Wipes

Item #: 2000  
Packaging: 60 ct  
Strength:  
**\$13.25**



### Men's Guard

Item #: 1811  
Packaging: 20 ct  
Strength:  
**\$15.25**



### Men's Underwear, Small/Medium

Item #: 2381  
Packaging: 20 ct  
Strength:  
**\$25.75**



### Men's Underwear, Large/X-Large

Item #: 2382  
Packaging: 18 ct  
Strength:  
**\$25.75**



### No-Rinse Body Wash

Item #: 1884  
Packaging: 8 oz  
Strength:  
**\$13.25**



### Overnight Bladder Control Pads

Item #: 2380  
Packaging: 30 ct  
Strength:  
**\$35.25**



### Premier Adult Briefs, Medium - 32" to 44" (Tabs)

Item #: 1993  
Packaging: 14 ct  
Strength:  
**\$32.75**



### Premier Adult Briefs, Large - 44" to 58" (Tabs)

Item #: 1994  
Packaging: 12 ct  
Strength:  
**\$32.75**



### Premier Adult Briefs, X-Large - 58" to 63" (Tabs)

Item #: 1995  
Packaging: 10 ct  
Strength:  
**\$32.75**



### Premier Disposable Underwear, Medium - 36" to 44" (Pull-up)

Item #: 1990  
Packaging: 18 ct  
Strength:  
**\$32.75**



### Premier Disposable Underwear, Large - 44" to 58" (Pull-up)

Item #: 1991  
Packaging: 16 ct  
Strength:  
**\$32.75**



### Premier Disposable Underwear, X-Large 56" to 68" (Pull-up)

Item #: 1992  
Packaging: 14 ct  
Strength:  
**\$32.75**



### Premoistened Adult Cleansing Wipes

Item #: 2500  
Packaging: 48 ct  
Strength:  
**\$9.00**



### Women's Maximum Bladder Control Pad

Item #: 1812  
Packaging: 20 ct  
Strength:  
**\$22.00**



### Women's Panty Liner

Item #: 1815  
Packaging: 28 ct  
Strength:  
**\$10.25**



### Women's Ultimate Bladder Control Pad

Item #: 1814  
Packaging: 20 ct  
Strength:  
**\$25.25**



### Women's Underwear, Medium

Item #: 2383  
Packaging: 20 ct  
Strength:  
**\$25.75**



### Women's Underwear, Large

Item #: 2385  
Packaging: 18 ct  
Strength:  
**\$25.75**



### Women's Underwear, X-Large

Item #: 2384  
Packaging: 16 ct  
Strength:  
**\$25.75**



## Skin & Sun Care

### Moisturizing Body Lotion with Aloe

Item #: 1893  
Packaging: 8 oz  
Strength:  
**\$8.75**



### Antibacterial Soap

Item #: 2436  
Packaging: 7.5 oz  
Strength:  
**\$13.00**



### Aveeno Daily Moisturizing Body Wash

Item #: 2356  
Packaging: 18 oz  
Strength:  
**\$24.25**



## Supports & Braces

### Heel & Elbow Protector, Small

Item #: 1774  
Packaging: 1 ct  
Strength:  
**\$15.00**



### Heel & Elbow Protector, Medium

Item #: 1773  
Packaging: 1 ct  
Strength:  
**\$13.25**



### Heel & Elbow Protector, Large

Item #: 1772  
Packaging: 1 ct  
Strength:  
**\$13.25**



### Heel & Elbow Protector, X-Large

Item #: 1775  
Packaging: 1 ct  
Strength:  
**\$13.25**



### Protective Arm Sleeve, Small

Item #: 1897  
Packaging: 1 pair  
Strength:  
**\$23.00**



### Protective Arm Sleeve, Large

Item #: 1898  
Packaging: 1 pair  
Strength:  
**\$27.75**



### Protective Arm Sleeve, X-Large

Item #: 1899  
Packaging: 1 pair  
Strength:  
**\$31.25**





# NOTICES

- If you disenroll from Longevity Health, your OTC benefit will automatically terminate.
- Longevity Health Plan Inc. is an HMO I-SNP with a Medicare contract. Longevity Health Plan of New Jersey Inc. is a PPO I-SNP with a Medicare contract.
- This information is available for free in other languages. Please call our customer service number at (855) 657-7547 (TTY: 711), Monday through Friday from 8 a.m. to 11 p.m. EST.
- The health information provided in the catalog is general in nature and is not medical advice or a substitute for professional health care.
- Some product costs may exceed benefit allowances and may not be affordable for some members.
- All product and company names are trademarks™ or registered® trademarks of their respective holders. Use of them does not imply any affiliation with or endorsement by them.
- From October 1 through March 31, Longevity Member Services' Hours of Operation are from 8:00 a.m. to 8:00 p.m. seven days a week (except Thanksgiving and Christmas). From April 1 through September 30 they are open Monday to Friday (except holidays). Please call member services at **1-855-799-2666**.
- All instances of Longevity Health refer to Longevity Health Plan.



# FREQUENTLY ASKED QUESTIONS

## **How much is my quarterly allowance?**

You can check your available balance online at [LongevityCatalogBenefit.com](https://LongevityCatalogBenefit.com) or by contacting us at (855) 657-7547 (TTY: 711), Monday - Friday from 8 a.m. to 11 p.m. EST.

## **Where can I find more information about the products?**

Create an account online at [LongevityCatalogBenefit.com](https://LongevityCatalogBenefit.com) and you will see descriptions and photos of the products available. You may also call our advocates for more information.

## **Does my OTC benefit allowance roll over if I don't use it?**

Unused OTC benefit dollars do not roll over from one period to the next, or from one year to the next. Make sure to take advantage of the benefit dollars before they expire!

## **What if I want to buy more products but do not have enough OTC benefit dollars?**

At this time, you cannot purchase products from this catalog or online that you don't have enough OTC benefit dollars for.

# NOTES



### Non-Discrimination Notice

Longevity Health Plan complies with applicable Federal civil rights laws and does not discriminate on the basis of race, color, national origin, age, disability, or sex (including pregnancy, sexual orientation, and gender identity). Longevity Health Plan does not exclude people or treat them differently because of race, color, national origin, age, disability, or sex (including pregnancy, sexual orientation, and gender identity).

Longevity Health Plan:

Provides free aids and services to people with disabilities to communicate effectively with us, such as:

- Qualified sign language interpreters
- Written information in other formats (e.g., large print, audio, accessible electronic formats, Braille, other formats)

Provides free language services to people whose primary language is not English, such as:

- Qualified interpreters
- Information written in other languages

**If you need these services**, contact Longevity Health Plan's Member Services at the contact information below.

If you believe that Longevity Health Plan has failed to provide these services or discriminated in another way on the basis of race, color, national origin, age, disability, or sex (including pregnancy, sexual orientation, and gender identity), you can file a grievance with:

Longevity Health Plan,  
11780 US 1, Suite N107,  
Palm Beach Gardens, FL 33408  
Telephone Number: (855) 696-5859; (TTY 711)  
Fax: 1-855-969-5853

Email: [Compliance@longevityhealthplan.com](mailto:Compliance@longevityhealthplan.com).

You can file a grievance in person or by mail or by calling Member Services. If you need help filing a grievance, the Longevity Health Plan Member Services is available to help you. **Member Services: 1-855-799-2666 (TTY 711)**. Calls to this number are free. Hours are 8 a.m. to 8 p.m., seven days a week (except Thanksgiving and Christmas) from October 1 through March 31, and Monday to Friday (except holidays) from April 1 through September 30.

You can also file a civil rights complaint with the U.S. Department of Health and Human Services at the Office for Civil Rights Complaint Portal, or by mail or phone at: U.S. Department of Health and Human Services, 200 Independence Avenue, SW, Room 509F, HHH Building Washington, DC 20201, 1-800-368-1019 TTY/TDD: 1-800-537-7637 (TDD).

Complaint forms are available at <http://www.hhs.gov/ocr/office/file/index.html>



# NOTES

Longevity Health is an HMO ISNP with a Medicare contract.  
Enrollment in Longevity Health depends on contract renewal.

Longevity Health is an PPO ISNP with a Medicare contract.  
Enrollment in Longevity Health depends on contract renewal.



Visit us online



[LongevityCatalogBenefit.com](http://LongevityCatalogBenefit.com)